



West Hill Way, Totteridge, N20

Offers Over £2,500,000

3823 Sq Ft - STUNNING 6 BEDROOM DETACHED HOUSE IN TOTTERIDGE.

A fantastic opportunity to acquire this substantial 3,828 sq ft six-bedroom detached family home, perfectly positioned on a highly sought-after residential turning just off Totteridge Lane.

Ideally located within easy reach of Totteridge & Whetstone Northern Line station and the prestigious South Herts Golf Club, the property offers an ideal blend of space, character, and convenience.

Internally, the house boasts six generously sized double bedrooms, four versatile reception rooms ideal for both formal entertaining and everyday family living, a spacious kitchen/breakfast room perfect for hosting, and three well-appointed bathrooms.

The home retains a wealth of charming original features, including elegant wood panelling in the entrance hall, staircase, and landing, adding warmth and timeless character. Outside, beautifully maintained gardens to the front and rear offer excellent outdoor space for relaxation and play, while the property also benefits from a garage and ample off-street parking, making this an exceptional family home in a prime North London location.

Viewing

Please contact our Mill Hill Office on 02089590011 if you wish to arrange a viewing appointment for this property or require further information.

- 3828 SQ FT - DETACHED HOUSE
- 6 BEDROOMS
- 4 RECEPTION ROOMS
- HUGE PLOT
- LARGE MODERN KITCHEN-BREAKFAST ROOM
- PRIME LOCATION
- STUNNING GARDEN
- CLOSE TO TRANSPORT LINKS



6



3



4

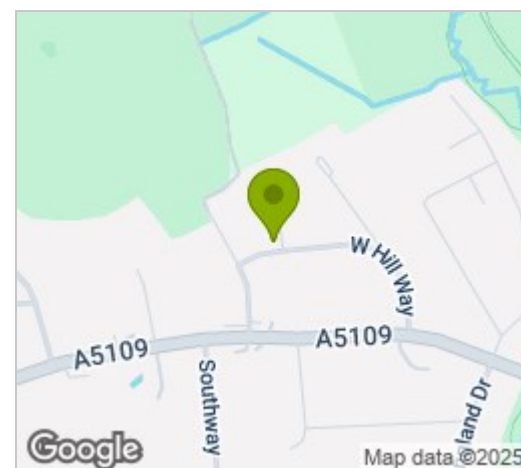


E

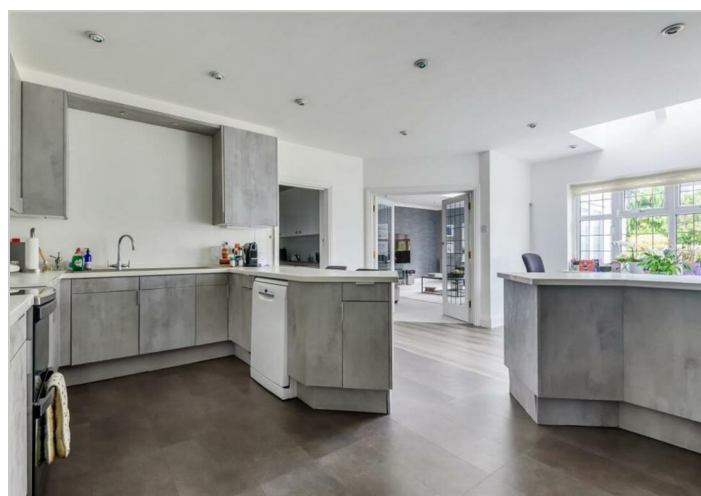
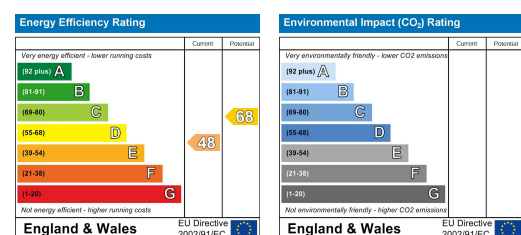
Floor Plan



Area Map



Energy Efficiency Graph



These particulars, whilst believed to be accurate are set out as a general outline only for guidance and do not constitute any part of an offer or contract. Intending purchasers should not rely on them as statements of representation of fact, but must satisfy themselves by inspection or otherwise as to their accuracy. No person in this firm's employment has the authority to make or give any representation or warranty in respect of the property.